

圖 1

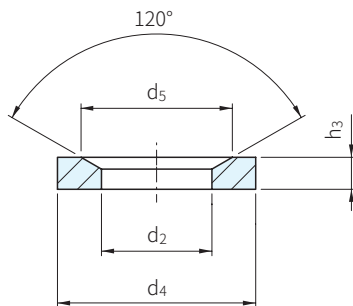


圖 2

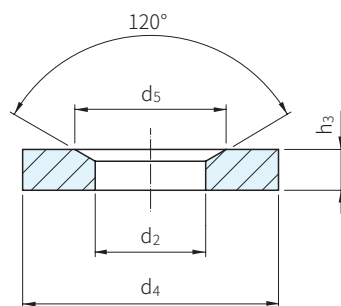
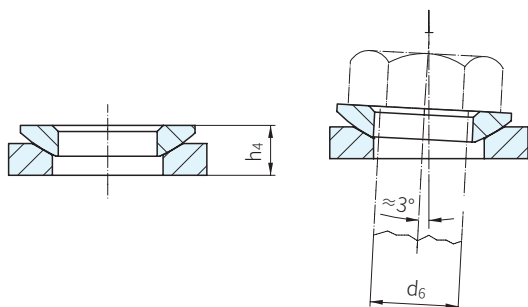


圖 3



材質	處理
鋼	染黑

圖1 品號	d1 H13	d3	h1	h2	h4 ≈ 配合錐型座(圖2)	h4 ≈ 配合錐型座(圖3)	r1	d6 適用螺柱	靜態荷重 max.KN	鎖固扭矩 max.Nm	質量 (g)	庫存
23050.0006	6.4	12	0.7	2.3	4.2	5.4	9.0	6	9	10	1.0	•
23050.0008	8.4	17	0.6	3.2	5.6	7.1	12.0	8	17	25	2.8	•
23050.0010	10.5	21	0.8	4.0	6.5	7.3	15.0	10	26	46	5.3	•
23050.0012	13.0	24	1.1	4.6	8.0	9.0	17.0	12	38	82	7.6	•
23050.0014	15.0	28	1.4	5.0	8.5	9.5	22.0	14	53	130	12.0	•
23050.0016	17.0	30	1.3	5.3	9.6	10.4	22.0	16	73	206	13.0	•
23050.0020	21.0	36	2.0	6.3	11.7	12.2	27.0	20	117	407	23.0	•
23050.0022	23.0*	40	2.5	7.6	13.5	-	29.5	22	146	542	34.0	•
23050.0024	25.0	44	2.4	8.2	15.2	15.7	32.0	24	168	698	45.0	•
23050.0027	28.0	50	3.3	10.2	17.0	-	36.0	27	221	1021	74.0	•
23050.0030	31.0	56	3.6	11.2	19.2	19.7	41.0	30	269	1355	101.0	•
23050.0033	34.0*	62	4.4	13.0	21.8	-	45.0	33	326	1969	149.0	•
23050.0036	37.0	68	4.6	14.0	23.5	-	50.0	36	394	2372	190.0	•
23050.0039	40.0*	75	5.6	16.0	26.8	-	54.0	39	460	3276	218.0	•
23050.0042	43.0	78	6.5	17.0	29.0	-	58.0	42	542	3802	310.0	•
23050.0048	50.0	92	8.0	21.0	35.5	-	67.0	48	714	5730	540.0	•
23050.0052	54.0*	96	9.3	22.0	38.3	-	72.0	52	832	7876	620.0	•
23050.0056	58.0*	103	9.8	23.0	39.3	-	79.0	56	960	9793	760.0	•
23050.0060	62.0*	112	11.0	25.0	43.6	-	86.0	60	1122	12219	990.0	•
23050.0064	66.0*	120	12.0	27.0	46.6	-	93.0	64	1269	14762	1220.0	•

圖2 品號	d ₂ H13	d ₄	d ₅	h ₃	d ₆ 適用螺栓	靜態荷重 max.KN	鎖固扭矩 max.Nm	質量 (g)	庫存
23050.0106	7.1	12	11.0	2.8	6	9	10	1.4	•
23050.0108	9.6	17	14.5	3.5	8	17	25	3.7	•
23050.0110	12.0	21	18.5	4.2	10	26	46	6.5	•
23050.0112	14.2	24	20.0	5.0	12	38	82	10.0	•
23050.0114	16.5	28	24.8	5.6	14	53	130	15.0	•
23050.0116	19.0	30	26.0	6.2	16	73	206	18.0	•
23050.0120	23.2	36	31.0	7.5	20	117	407	30.0	•
23050.0122	26.0*	40	34.0	8.5	22	146	542	44.0	•
23050.0124	28.0	44	37.0	9.5	24	168	698	61.0	•
23050.0127	31.5*	50	43.0	10.5	27	221	1021	90.0	•
23050.0130	35.0	56	49.0	12.0	30	269	1355	124.0	•
23050.0133	38.5*	62	55.0	14.0	33	326	1969	180.0	•
23050.0136	42.0	68	60.0	15.0	36	394	2372	230.0	•
23050.0139	45.0*	75	67.0	17.0	39	460	3276	339.0	•
23050.0142	49.0	78	70.0	18.0	42	542	3802	360.0	•
23050.0148	56.0	92	82.0	22.0	48	714	5730	640.0	•
23050.0152	60.0*	96	85.0	24.0	52	832	7876	740.0	•
23050.0156	65.0*	103	93.0	25.0	56	960	9793	900.0	•
23050.0160	70.0*	112	102.0	28.0	60	1122	12219	1165.0	•
23050.0164	75.0*	120	110.0	30.0	64	1269	14762	1430.0	•

圖3 品號	d ₂ H13	d ₄	d ₅	h ₃	d ₆ 適用螺栓	靜態荷重 max.KN	鎖固扭矩 max.Nm	質量 (g)	庫存
23050.0206	7.1	17	11.0	4.0	6	9	10	5.6	•
23050.0208	9.6	24	14.5	5.0	8	17	25	14.0	•
23050.0210	12.0	30	18.5	5.0	10	26	46	22.0	•
23050.0212	14.2	36	20.0	6.0	12	38	82	39.0	•
23050.0214	16.5	40	24.8	6.0	14	53	130	47.0	•
23050.0216	19.0	44	26.0	7.0	16	73	206	65.0	•
23050.0220	23.2	50	31.0	8.0	20	117	407	93.0	•
23050.0224	28.0	60	37.0	10.0	24	168	698	165.0	•
23050.0230	35.0	68	49.0	12.0	30	269	1355	235.0	•

WA. 注意

- 23050圓錐型座與球面華司配合使用，可修正傾斜面的夾持
- 標上*記號的尺寸，不是DIN標準
- 其它種類華司請參考本單元
- 1 KN = 101.972 kgf

 訂貨： 交期： 天

23050.0006

EX. 使用例